

- In accordance with IEC 61247
- Particularly suitable for power transformers and energy storage chokes
- PM cores are supplied in sets

Magnetic characteristics (per set)

$\Sigma l/A = 0,191 \text{ mm}^{-1}$

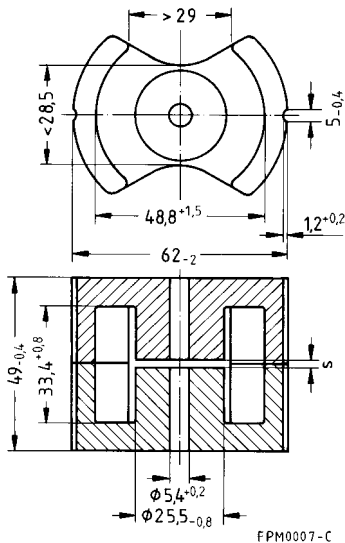
$l_e = 109 \text{ mm}$

$A_e = 570 \text{ mm}^2$

$A_{\min} = 470 \text{ mm}^2$

$V_e = 62\,000 \text{ mm}^3$

Approx. weight 280 g/set



Gapped

Material	A_L value nH	s approx. mm	μ_e	Ordering code
N27	$315 \pm 3 \%$	2,60	48	B65684-A315-A27
	$630 \pm 3 \%$	1,10	95	B65684-A630-A27

Ungapped

Material	A_L value nH	μ_e	$A_{L1\min}$ nH	P_V W/set	Ordering code
N27	$9200 + 30/- 20 \%$	1400	5950	9,5 (200 mT, 25 kHz, 100 °C)	B65684-A-R27
N87	$9200 + 30/- 20 \%$	1400	5950	5,8 (200 mT, 100 kHz, 100 °C)	B65684-A-R87

Mounting assembly

- For chassis mounting¹⁾ or printed circuit boards
- The set comprises a yoke and a base plate
- Fixing nuts M3 and washers are supplied

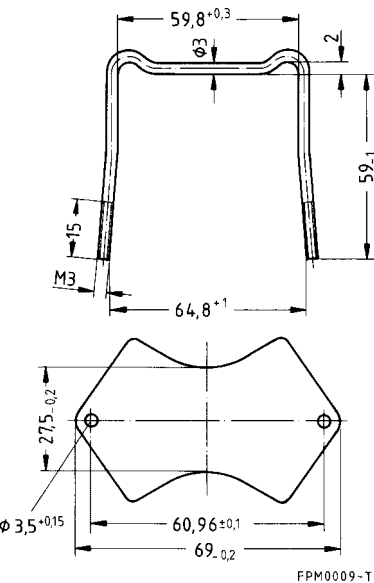
Yoke

- Material: Brass clamping yoke (\varnothing 3 mm) with thread

Base plate

- Material: Aluminum (0,6 mm)

	Ordering code
Complete mounting assembly including nuts and washers	B65685-A2000



1) On a chassis the coil former must be mounted with its solder pins upward.