

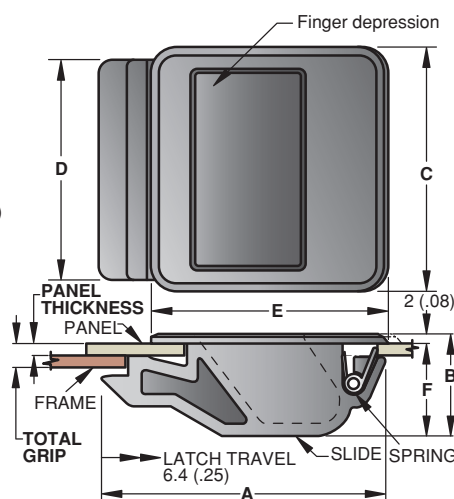
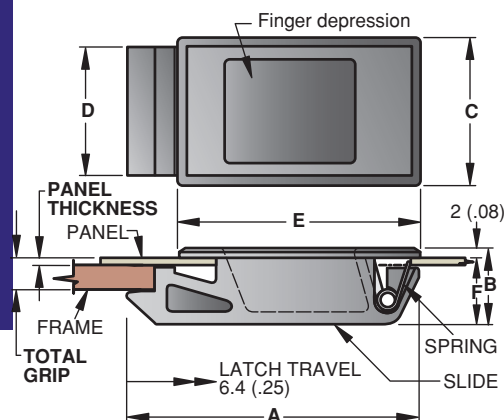
Southco® Push to Close Latches

Slide Latch, Flush Style

- Slide to open
- Single-hole, snap-in installation
- Corrosion-resistant materials
- Three sizes

Series 40 and 50

Series 99 (deeper depression)

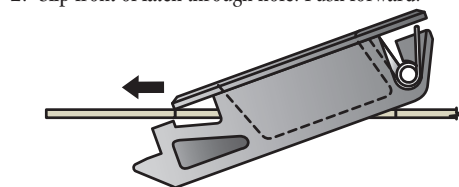
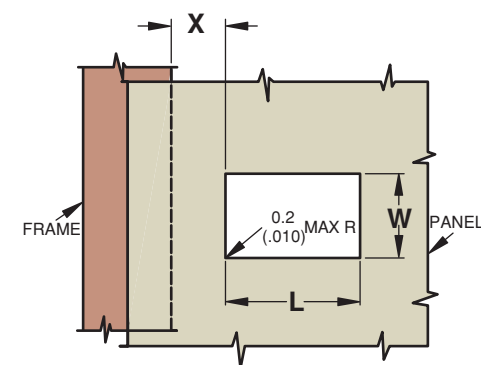


SIZE	GRIP		DIMENSIONS						PART NUMBER	
	Panel Thickness	Total Grip	A	B	C	D	E	F	UL94-HB	UL94-V0
Series 40	1.2 ± 0.1 (.050 ± .005)	6.4 ± 0.1 (.250 ± .005)	57 (2.23)	15 (.58)	28 (1.11)	25 (.99)	47 (1.84)	13 (.50)	A3-40-525-12 •	A3-99-187-12
	1.6 ± 0.2 (.060 ± .005)	6.4 ± 0.1 (.250 ± .005)	57 (2.23)	15 (.58)	28 (1.11)	25 (.99)	47 (1.84)	13 (.50)	A3-40-625-12 •	A3-99-130-12
Series 50	2.2 ± 0.2 (.090 ± .005)	6.4 ± 0.1 (.250 ± .005)	57 (2.23)	15 (.58)	47 (1.86)	44 (1.74)	47 (1.84)	13 (.50)	A3-50-925-12 •	A3-99-144-12
Series 99	2.2 ± 0.2 (.090 ± .005)	6.4 ± 0.1 (.250 ± .005)	57 (2.23)	21 (.81)	50 (1.95)	44 (1.74)	48 (1.87)	19 (.74)	A3-99-122-12 •	A3-99-253-12

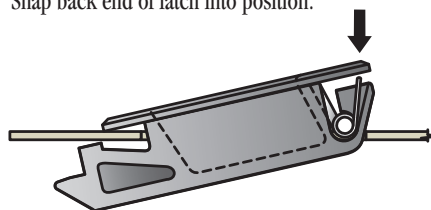
Installation

1. Prepare burr-free hole.

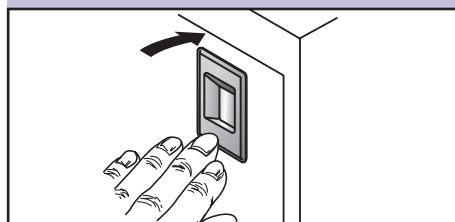
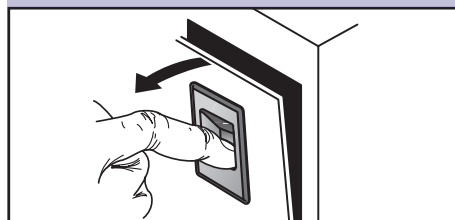
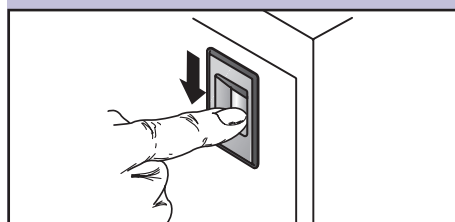
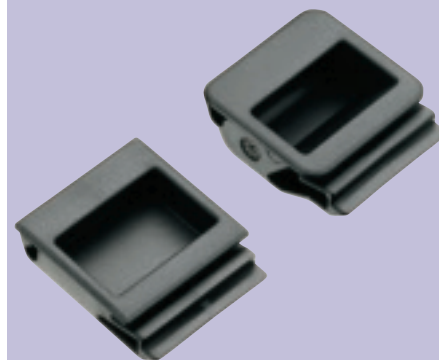
2. Slip front of latch through hole. Push forward.



3. Snap back end of latch into position.



SERIES	INSTALLATION		
	L	W	X
40	38 ± 0.2 (1.500 ± .005)	25.5 ± 0.2 (1.00 ± .005)	12.5 ± 1.0 (.50 ± .03)
50	38 ± 0.2 (1.500 ± .005)	44.5 ± 0.1 (1.75 ± .005)	12.5 ± 1.0 (.50 ± .03)
99	38 ± 0.2 (1.500 ± .005)	44.5 ± 0.1 (1.75 ± .005)	12.5 ± 1.0 (.50 ± .03)



Material and Finish

SLIDE: Black ABS, textured.

SPRING: 302 Stainless steel, passivated.

Product Strength Guidelines

(To assist in your product selection; samples are available for your evaluation.)

Average ultimate load:

580 N (130 lbs.)

Maximum working load for:

40 Series: 180 N (40 lbs.)

50 and 99 Series: 220 N (50 lbs.)

Flammability Rating: UL94 - HB or UL94-V0

Operating Temperature Range:
- 40°C (-40°F) to 60°C (140°F)

millimeter (inch)

millimeter
(inch)

Dimensions without tolerances are for reference only.

REV	DATE	DRAWN/CHKD	DESCRIPTION
M	20APR94	JGK	REDRAWN ON CAD & PRN: A3-62
N	25MAY2001	RJB	PRN: P2001-0259
O	24JUL2003	AJH/DLH	PRN: P2003-0629

ASSEMBLY	SLIDE MATERIAL
A3-40-625-XX	TEXTURED ABS

INCHES

ALL DIMENSIONS WITHOUT TOLERANCES ARE FOR REFERENCE ONLY.



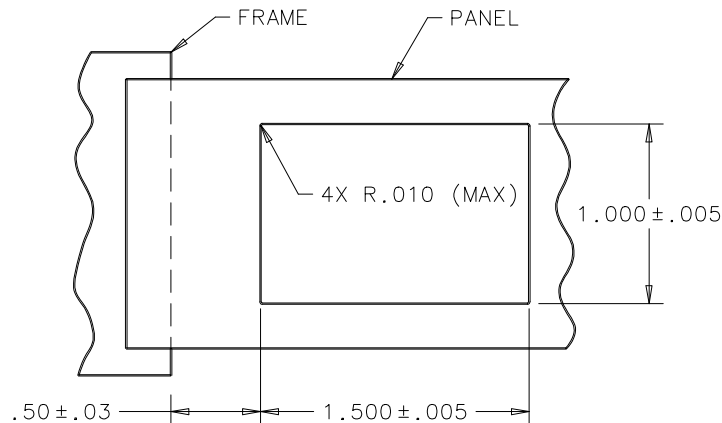
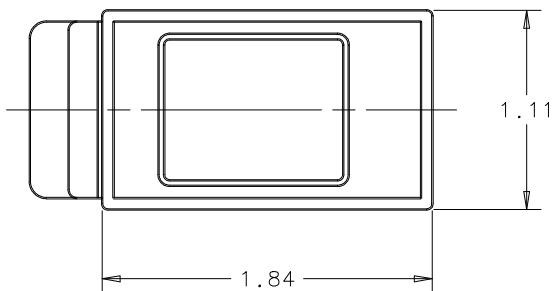
NOTES:

A. INSTALLATION:

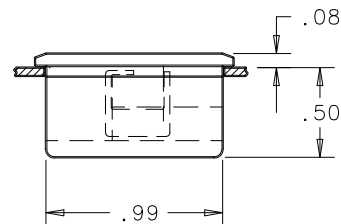
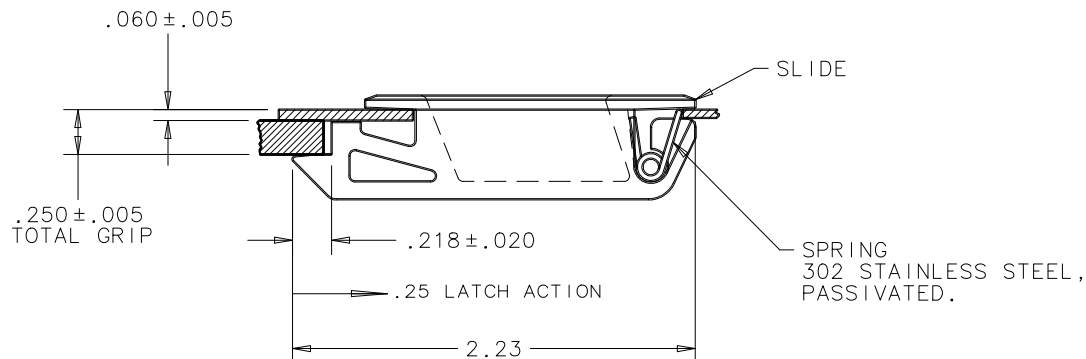
1. PREPARE A BURR-FREE HOLE AS SHOWN.
2. SLIP FRONT OF LATCH THROUGH THE HOLE AND PUSH FORWARD.
3. SNAP BACK END OF LATCH INTO POSITION.

B. SLIDE COLORS (-XX):

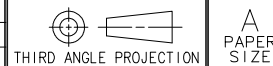
- 03 PEARL GRAY
- 04 DARK BROWN
- 09 PEBBLE GRAY (IBM)
- 11 WHITE
- 12 BLACK
- 14 GRAY
- 15 BEIGE



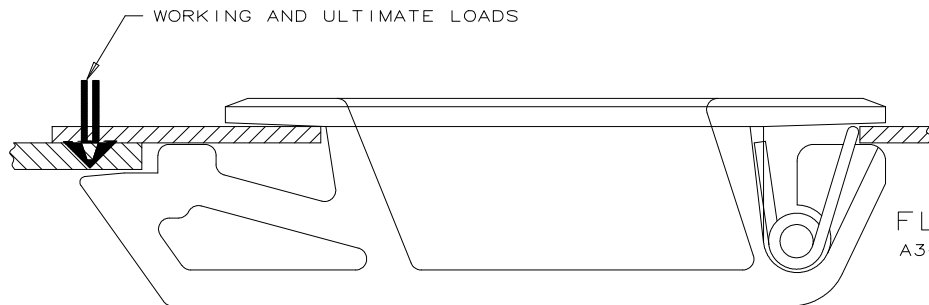
PANEL PREPARATION



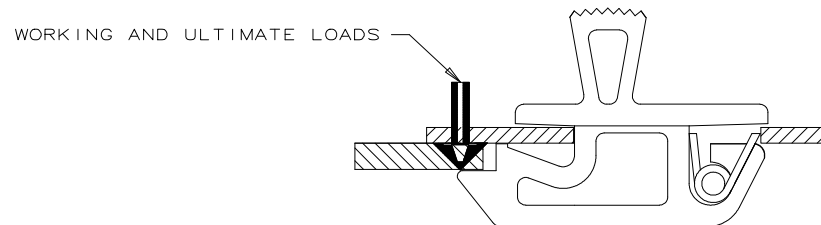
REV	DATE	DRAWN/CHKD	DESCRIPTION								
A	05OCT00	GDM	REVISED A3-10 DATA								
B	09APR2002	GDM	UPDATE FORMAT								



SOUTHCO PERFORMANCE GUIDELINES
THE PERFORMANCE GUIDELINES SHOWN ON THIS PAGE ARE SUPPLIED AS A GENERAL GUIDE ONLY, AS CONDITIONS VARY WITH EACH APPLICATION AND METHOD OF INSTALLATION. STRENGTH DATA GIVEN IS FOR FAILURE OF THE PRODUCT OR FOR SUFFICIENT DEFORMATION TO MAKE PRODUCT INOPERABLE. NO SAFETY FACTOR HAS BEEN APPLIED IT IS RECOMMENDED THAT THE USER REQUEST A PRODUCT SAMPLE FOR TESTING TO DETERMINE THE SUITABILITY OF THE PRODUCT FOR THE PURPOSE INTENDED AND USER'S PARTICULAR APPLICATION.



FLUSH STYLE
A3-40 SERIES SHOWN



TAB STYLE
A3-20 SERIES SHOWN

LATCH SERIES	LATCH STYLE	MAXIMUM RECOMMENDED WORKING LOAD ①	AVERAGE ULTIMATE LOAD ②	CYCLE LIFE ③
A3-10 SERIES	TAB STYLE	25 N (5 LBS)	*145 N (30 LBS)	* 10,000
A3-20 SERIES		90 N (20 LBS)	155 N (35 LBS)	20,000
A3-30 SERIES		130 N (30 LBS)	310 N (70 LBS)	45,000
A3-40 SERIES	FLUSH STYLE	180 N (40 LBS)	580 N (130 LBS)	20,000
A3-50 SERIES		220 N (50 LBS)	580 N (130 LBS)	45,000
A3-99 SERIES				

- ① WORKING LOAD is the maximum force that the product will withstand without affecting the operation or appearance of the product.
- ② Average ULTIMATE LOAD causes failure of the product or sufficient deformation to make the product inoperable.
- ③ CYCLE LIFE is based on fatigue life of the torsion spring component.