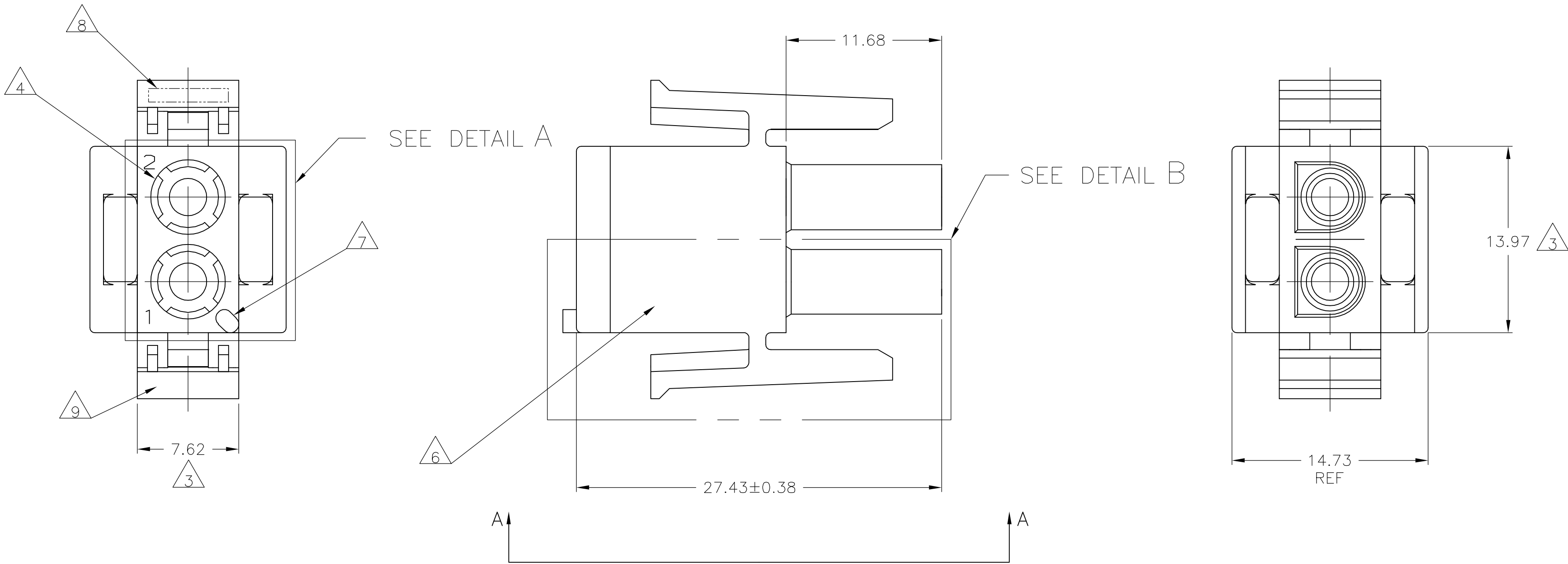
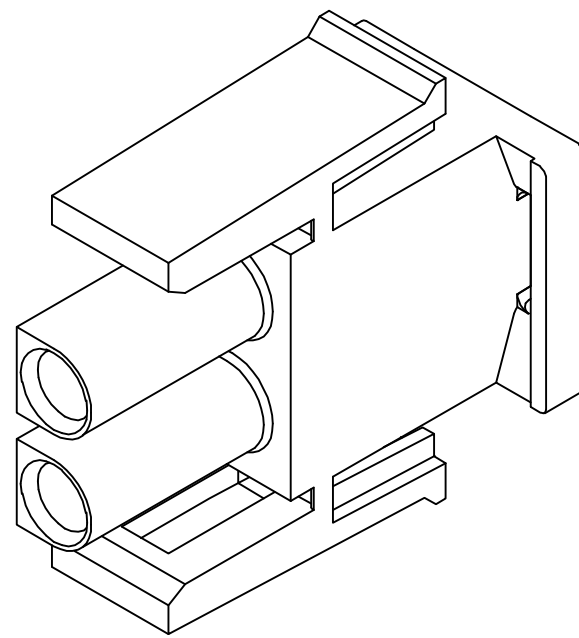
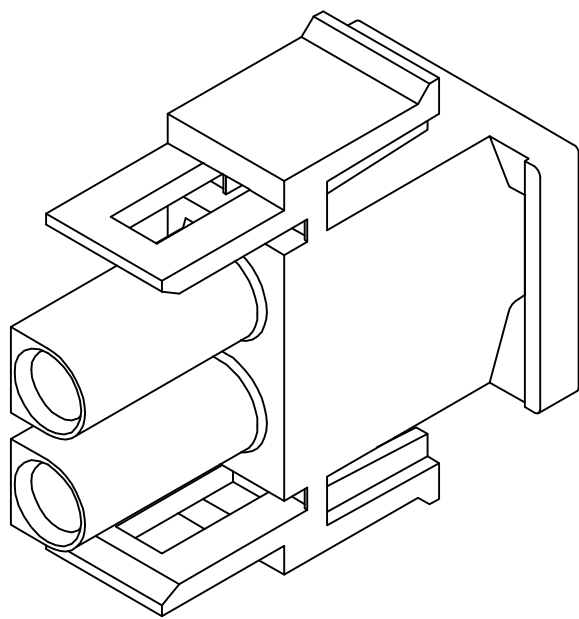
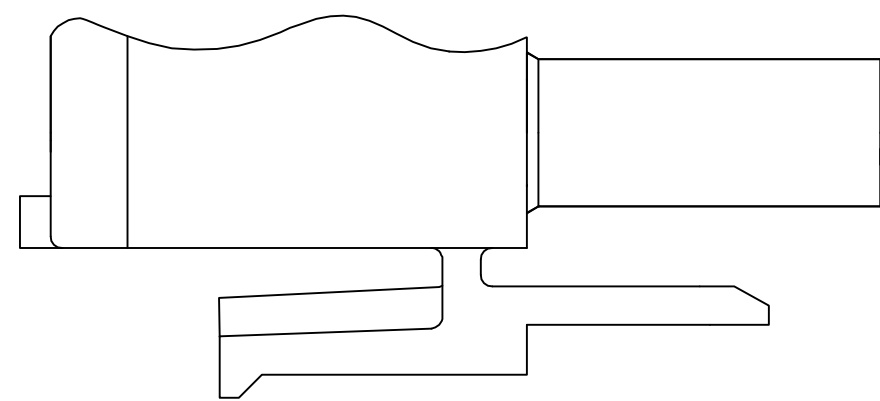
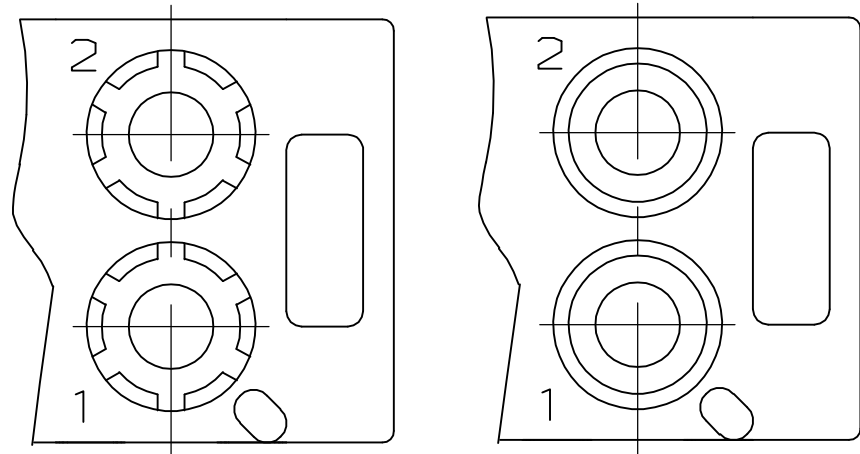
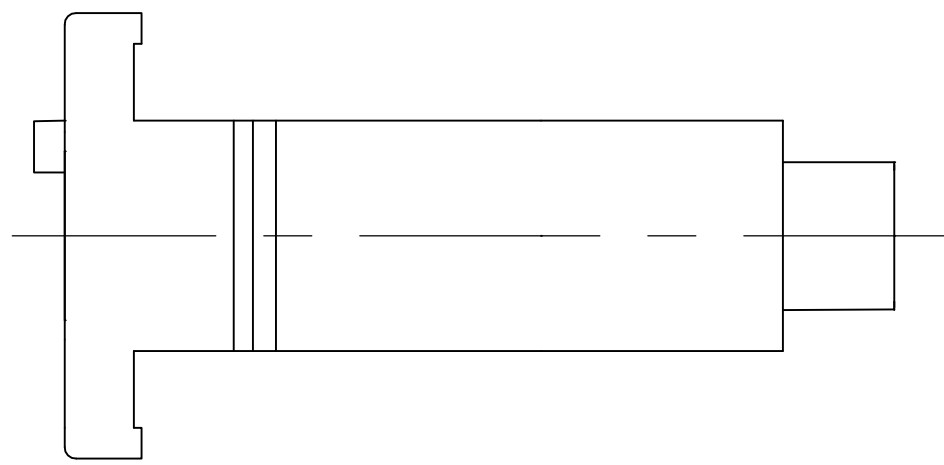
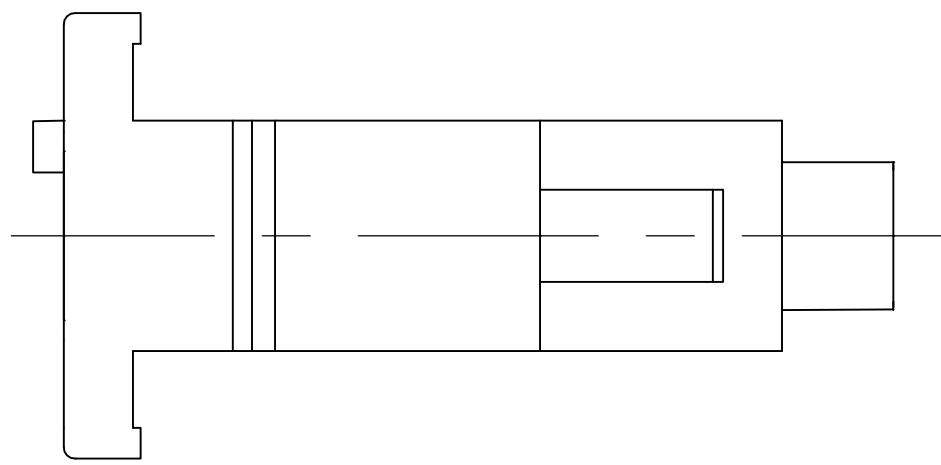


LOC	DIST	REVISIONS					
CM	0	P	LTR	DESCRIPTION	DATE	DWN	APVD
			AB2	ECO-06-018902	21AUG06	BSV	GSR



- MATES WITH APPROPRIATE UNIVERSAL MATE-N-LOK™ CAP OR HEADER.
- SMALL NICKS ARE PERMITTED ON THE CIRCUIT TOWERS WHICH COULD INCREASE THE INITIAL HOUSING MATING FORCE BY UP TO 4.4 NEWTONS [1.0] LBS. NO INDIVIDUAL NICKED TOWER SHALL INCREASE THIS FORCE BY OVER 2.2 NEWTONS [.5] LBS.
- DIMENSION INDICATED IS AS MOLDED. ADDITIONAL GROWTH DUE TO SUBSEQUENT MOISTURE ABSORPTION MAY OCCUR.
- FOUR RIBS EQUALLY SPACED, NO SPECIFIC ORIENTATION, NO RIBS OR SIX RIBS EQUALLY SPACED, NO SPECIFIC ORIENTATION, OPTIONAL.
- NOT MANUFACTURED IN U.S.
- UNDERWRITERS RECOGNIZED COMPONENT LOGO AND CSA CERTIFICATION LOGO TO BE LOCATED ONCE ON ANY SIDE OF HOUSING.
- POSITION #1 LOCATOR FEATURE MAY BE ROUND OR OBLONG (AS DEPICTED).
- TRADEMARK LOCATION (AMP OR TYCO).
- MANUFACTURING LOCATION ID (OPTIONAL).



27.43	1.080
14.73	.580
13.97	.550
11.68	.460
7.62	.300
0.38	.015
0.13	.005
MM	IN
CONVERSION TABLE	

AMP 4805 REV 31MAR2000

METRIC

BLACK	1-350777-9
GRAY	1-350777-8
BLUE	1-350777-6
GREEN	1-350777-5
YELLOW	1-350777-4
ORANGE	1-350777-3
RED	1-350777-2
BROWN	1-350777-1
△	350777-4
NATURAL	350777-1
COLOR	PART NUMBER

THIS DRAWING IS A CONTROLLED DOCUMENT.		DWN R. VESTAL	24JAN95	<b>tyco</b> <b>Electronics</b>		Tyco Electronics Corporation Harriburg, PA 17105-3608	
		CHK R. SWING	24JAN95				
DIMENSIONS:		APVD D. SELF	24JAN95	NAME		PLUG, 2 CIRCUIT, UNIVERSAL MATE-N-LOK(TM)	
mm		PRODUCT SPEC		APPLICATION SPEC		RESTRICTED TO	
0.13		TOLERANCES UNLESS OTHERWISE SPECIFIED:		SIZE		CAGE CODE	
0.13		0.13		DRAWING NO		DRAWING NO	
0.13		0.13		WEIGHT		WEIGHT	
0.13		0.13		CUSTOMER DRAWING		SCALE	
0.13		0.13		SHEET		OF	
0.13		0.13		REV		AB2	
0.13		0.13		SCALE		4:1	
0.13		0.13		SHEET		1	
0.13		0.13		OF		1	
0.13		0.13		REV		AB2	
0.13		0.13		SCALE		4:1	
0.13		0.13		SHEET		1	
0.13		0.13		OF		1	
0.13		0.13		REV		AB2	