

Fuse Clips For Printed Circuit Boards

219083 *

For 1/4" Dia. Fuses (With End Stops & Without End Stops)

Catalog Number	Clip Mat.*	Finish	
1A1907-06	Spg Br	Bright Tin	
1A1907-05	BeCu*	Silver	
1A1907-03	BeCu*	Bright Tin	
1A3398-07†	Spg Br	Bright Tin	
1A1119-10	Spg Br	Bright Tin	
1A1119-05	BeCu*	Silver	
1A1119-04	BeCu*	Bright Tin	

For 1/4" Dia. Fuses (Without End Stops)

Catalog Number	Clip Mat.*	Finish	
1A1120-09	Spg Br	Bright Tin	
1A1120-05	BeCu*	Silver	
1A1120-06	BeCu*	Bright Tin	

For 1/4" Dia. Fuses (With and Without End Stops)

Catalog Number	Clip Mat.*	Finish	
1A4533-01	Be Cu*	Bright Tin	
1A4533-06	Spg Br	Bright Tin	
1A4534-01	BeCu*	Bright Tin	
1A4534-06	Spg Br	Bright Tin	

*Beryllium copper recommended for currents higher than 15 amps (1/4" clips); 10 amps (5mm clips). Spg Br—Spring Bronze; BeCu—Beryllium Copper.

For 5mm Dia. (With End Stops)

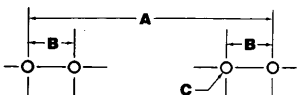
Catalog Number	Clip Mat.*	Finish	
1A3399-10	Spg Br	Bright Tin	
1A3399-01	BeCu*	Silver	
1A3399-04	BeCu*	Bright Tin	
High Profile			
1A5018-10	Spg Br	Bright Tin	
1A5018-7		Silver	

For 13/32" Dia. Fuses (20 Amps Max.)

Catalog Number	Clip Mat.*	Finish	
1A3400-09	Spg Br	Bright Tin	

*Beryllium copper recommended for currents higher than 15 amps (1/4" clips); 10 amps (5mm clips). Spg Br—Spring Bronze; BeCu—Beryllium Copper.

Footprint Dimensions



Fuse Clip Catalog Number

Dim.	Fuse Size	1A1907-	1A1119-	1A1120-	1A3399-	1A3400-	1A4533-	1A4534-	1A5018-
A	7/8" (22.2mm)	1.00" (25.40mm)	1.00" (25.40mm)	1.00" (25.40mm)	—	—	1.00" (25.40mm)	1.00" (25.40mm)	—
	1" (25.4mm)	1.125" (28.58mm)	1.125" (28.58mm)	1.125" (28.58mm)	—	—	1.125" (28.58mm)	1.125" (28.58mm)	—
	1 1/4" (31.8mm)	1.375" (34.92mm)	1.375" (34.92mm)	1.375" (34.92mm)	—	—	1.375" (34.92mm)	1.375" (34.92mm)	—
	1 5/8" (34.93mm)	—	—	—	—	1.50" (38.10mm)	—	—	—
	1 3/2" (38.10mm)	—	—	—	—	1.625" (41.28mm)	—	—	—
	20mm	—	—	—	.875" (22.23mm)	—	—	—	.820" ± .015" (20.80 ± .38mm)
B Tabs		.295"–.305" (7.49–7.75mm)	.295"–.305" (7.49–7.75mm)	.295"–.305" (7.49–7.75mm)	.200" (5.08mm)	.405" (10.29mm)	.300" (7.62mm)	.300" (7.62mm)	.180" (4.6mm)
C (4 holes)		.067"–.070" (1.70–1.78mm)	.093" ± .002" (2.36 ± .05mm)	.093" ± .002" (2.36 ± .05mm)	.067"–.070" (1.70–1.78mm)	.091"–.095" (2.31–2.41mm)	.067"–.070" (1.70–1.78mm)	.067"–.070" (1.70–1.78mm)	.053" ± .002" (1.35 ± .05mm)
Board Thickness		.093" (2.36mm)	.062" to .125" (1.57 to 3.18mm)	.062" to .125" (1.57 to 3.18mm)	.093" (2.36mm)	.125" (3.18mm)	.062" (1.57mm)	.062" (1.57mm)	.093" (2.36mm)

Fuse Clips for Printed Circuit Boards

For ATC, 5mm, 1/4" & 13/32" Diameter Fuses

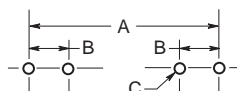
1AXXXX

Series

Fuse Clip Catalog Numbers

Footprint

Dimensional Data



Catalog Number	Dimensions						ATC	ATM	B Tabs	C (4 holes)	Board Thickness
	7/8" (22.2mm)	1" (25.4mm)	1 1/4" (31.8mm)	1 3/8" (34.93mm)	1 1/2" (38.10mm)	20mm					
1A5778-	—	—	—	—	—	—	—	.464" (11.79)	.144" (3.66)	.065" ± .002" (1.65 ± .05)	.062" (1.57)
1A5779-	—	—	—	—	—	—	—	.464" (11.79)	.144" (3.66)	.065" ± .002" (1.65 ± .05)	.062" (1.57)
1A5780-	—	—	—	—	—	—	.560 (14.22)	—	.200" (5.08)	.100" ± .002" (2.54 ± .05)	.062" (1.57)
1A3398-	1.00" (25.40)	1.125" (28.58)	1.375" (34.920)	—	—	—	—	—	.295" - .305" (7.49 - 7.75)	.067" - .070" (1.70 - 1.78)	.093" (2.36)
1A1907-	—	—	—	—	—	—	—	—	.295" - .305" (7.49 - 7.75)	.093" ± .002" (2.36 ± .05)	.062" to .125" (1.57 to 3.18)
1A1119-	1.00" (25.40)	1.125" (28.58)	1.375" (34.92)	—	—	—	—	—	.295" - .305" (7.49 - 7.75)	.093" ± .002" (2.36 ± .05)	.062" to .125" (1.57 to 3.18)
1A1120-	1.00" (25.40)	1.125" (28.58)	1.375" (34.920)	—	—	—	—	—	.295" - .305" (7.49 - 7.75)	.093" ± .002" (2.36 ± .05)	.062" to .125" (1.57 to 3.18)
1A3399-	—	—	—	—	—	.875" (22.23)	—	—	.200" (5.08)	.067" - .070" (1.70 - 1.78)	.093" (2.36)
1A3400-	—	—	—	1.50" (38.10)	1.625" (41.28)	—	—	—	.405" (10.29)	.091" - .095" (2.31 - 2.41)	.125" (3.18)
1A4533-	1.00" (25.40)	1.125" (28.58)	1.375" (34.920)	—	—	—	—	—	.300" (7.62)	.067" - .070" (1.70 - 1.78)	.062" (1.57)
1A4534-	1.00" (25.40)	1.125" (28.58)	1.375" (34.920)	—	—	—	—	—	.300" (7.62)	.067" - .070" (1.70 - 1.78)	.062" (1.57)
1A5018-	—	—	—	—	—	.820" ± .015" (20.80 ± .38)	—	—	.180" (4.6)	.053" - .002" (1.35 - 0.05)	.093" (2.36)
1A5600-	—	—	—	—	—	—	—	—	.200" (5.08)	.052" ± .003" (1.32 ± .077)	.125" max. (3.18)
1A5601-	—	—	—	—	—	.820" ± .015" (20.80 ± .38)	—	—	.266" (6.76)	.067" ± .003" (1.70 ± .074)	.062" (1.57)
1A5602-	—	—	—	—	—	—	—	—	.220" (5.588)	—	.125" max. (3.175)

*Spg. Br. - Spring Bronze; BeCu - Beryllium Copper; Cart. Brass - Cartridge Brass

**Beryllium copper recommended for currents higher than 15 amps (1/4" clips).

The only controlled copy of this Data Sheet is the electronic read-only version located on the Bussmann Network Drive. All other copies of this document are by definition uncontrolled. This bulletin is intended to clearly present comprehensive product data and provide technical information that will help the end user with design applications. Bussmann reserves the right, without notice, to change design or construction of any products and to discontinue or limit distribution of any products. Bussmann also reserves the right to change or update, without notice, any technical information contained in this bulletin. Once a product has been selected, it should be tested by the user in all possible applications.

